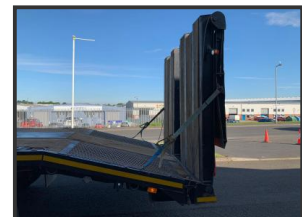


# STRATHCLYDE

## COMMERCIALS & PLANT LTD

### 2014 (64) Volvo FM410 8x2 Plant Lorry



### £POA

2014 (64) Volvo FM410 8x2 Plant Lorry  
 day cab, AdBlu, reverse camera  
 Beaver tail body, flip toe ramps  
 winch, twist locks  
 full body length -  
 Flat part of body length -  
 Mileage: 282.500km

#### Product Details

Product Details	
<b>Category/Type</b>	<b>Rigid Trucks</b>
<b>Make</b>	<b>2014 (64) Volvo</b>
<b>Model</b>	<b>FM410 8x2 Plant Lorry</b>
<b>Year</b>	<b>2014</b>
<b>Mileage</b>	<b>282,500km</b>

16 James Street, Righead Ind. Est., Bellshill, South Lanarkshire, ML4 3LU  
 Tel: +44 (0)7856 172577 Mob: +44 (0)7919 324959  
[www.strathclydecommercials.co.uk](http://www.strathclydecommercials.co.uk) [info@strathclydegroupp.co.uk](mailto:info@strathclydegroupp.co.uk)