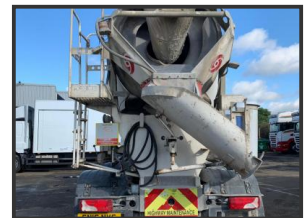


# STRATHCLYDE

## COMMERCIALS & PLANT LTD

### 2016 (16) Scania P410 8x4 Mixer



### £POA

2016 (16) Scania P410 8x4 Mixer  
 Sleeper cab, 8 spd manual gearbox, AdBlu  
 Telephone pack, camera system, sunroof

Hymix Equipment  
 GVW: 32,000kg  
 Reg: SN16NVG  
 D.O.R: 01/03/2016

#### Product Details

Product Details	
<b>Category/Type</b>	<b>Rigid Trucks</b>
<b>Make</b>	<b>2016 (16) Scania</b>
<b>Model</b>	<b>P410 8x4 Mixer</b>
<b>Year</b>	<b>2016 (16)</b>
<b>Mileage</b>	<b>121,200km</b>

16 James Street, Righead Ind. Est., Bellshill, South Lanarkshire, ML4 3LU  
 Tel: +44 (0)7856 172577 Mob: +44 (0)7919 324959  
[www.strathclydecommercials.co.uk](http://www.strathclydecommercials.co.uk) [info@strathclydegroupp.co.uk](mailto:info@strathclydegroupp.co.uk)